

Welcome

Leeds County AGM 2022



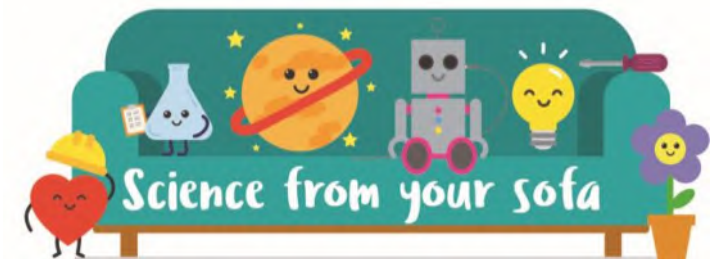
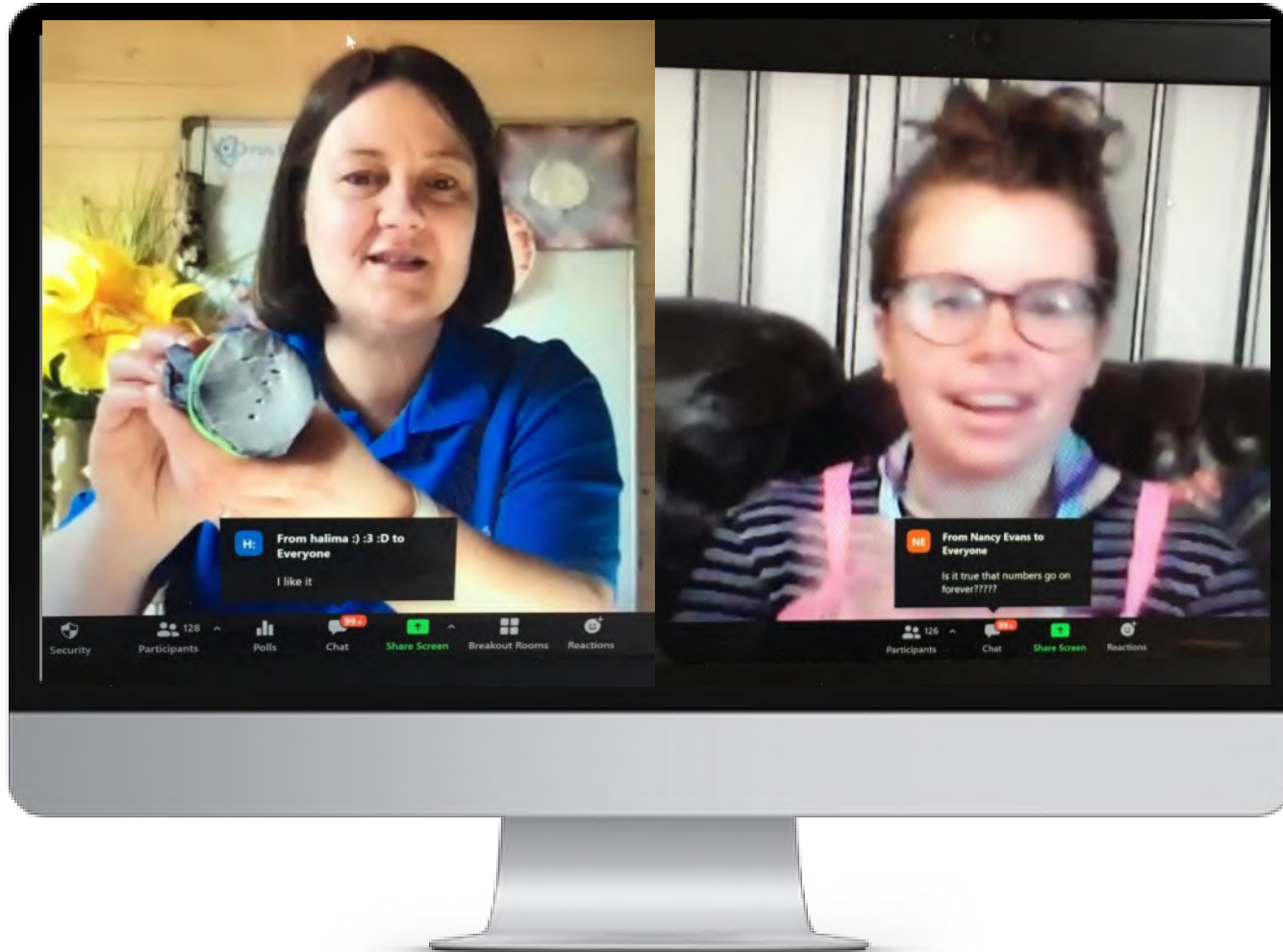


County Commissioner's Winter & Spring Challenges





March Science from Your Sofa





March

Four Counties Shared a Virtual Training Day

185 participants
from 4 counties

104 members from
Girlguiding Leeds

South Yorkshire, North Tyneside,
North Yorkshire West and Leeds!

12 training topics
over three time slots

33 training sessions

Trainers came from

6 countries/regions

North East England, Scotland,
LaSER, Anglia, Midlands and
North West England





Awards were still presented

All those who completed their...



60 Amazing Years

with Judith Emsley






Congratulations

Judith Emsley



May

We launched our weekly Shout outs

Thank you... 

A BIG THANKS to Denise S

An all around super star.

Thank you for your help,
support and friendship over
the last year.

Lockdown would have been
so much more difficult
without you.

Nominated by Janet,
friend & colleague
at Wortley Guides



A BIG THANKS to Carol C

Our Depot Guru in the
Wattlesyke Division

During the pandemic, Carol
kept our depot open from
home! She took orders
online & delivered to our
leaders. Even as we go back
F2F she continues to deliver
uniforms to our new starters
all while running her own
units! Thank you Carol for
just being awesome.

Nominated by Audrey



A BIG THANKS to Angela F

An amazing leader at
3rd Kippax Brownies

During lockdown our weekly
meetings were a huge
success as Angela would
gather together resources
needed for each meeting and
distribute them to each of
the Brownies. She was there
without fail and played a
huge part in keeping our
Brownies going and
interested.

Nominated by Michelle



A BIG THANKS to our DBS CHECKERS

Helping us keep our girls
safe is a big job and
Stephanie H, Sarah W, Sue
A and Sue E from the
Trefoil Centre DBS team
along with the Abbeywood
Division's DBS team have
been called out especially
for all their help!

Nominated by Louise
and Francis





Adventure & Events Team Leads Appointed



Warm Welcome Lead – Jean Woodcock

- Join Us Coordinators – *Jean Woodcock & Lynne Reid*
- Welcomers/Buddies – *Division based*
- DBS Coordinator/DBS Verifiers – *Division based*
- GO Coordinator – *Sandra Goddard*
- Induction – *in conjunction with Training Team*
- Safeguarding Lead - *vacancy*
- Inclusion & Diversity Adviser – *Joanne Hoare*
- SEN Adviser – *Heather Dowling*

Recruitment & Raising Awareness Lead – Mel Black

- Publications (Newsletters & Resources) – *Al Jones & Holly Ingram*
- Social Media – *Liisa Suidt & Mel Black*
- Website – *Glow (Davina/Liisa providing content)*
- Public Relations - *vacancy*
- Getting ready for growth - *vacancy*

Valuing Members Lead – Sarah Haley

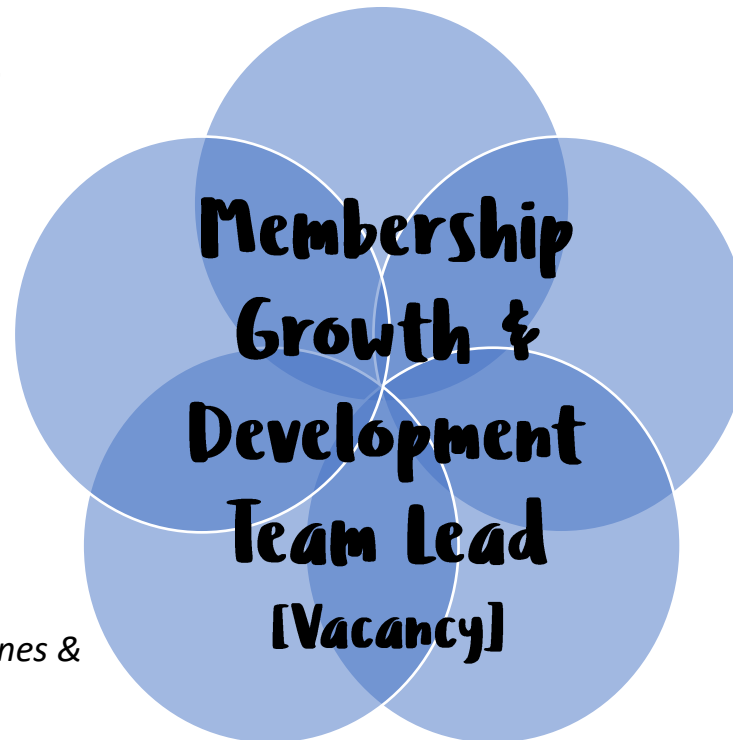
- Adult retention - *vacancy*
- Recognition – *Andrea Simon*
- Keeping girls in guiding longer - *vacancy*
- Flexible guiding
- Training - *vacancy*
- Wellbeing – *Sophie Kelly*

Wider Opportunities Lead

- Young Leader Adviser – *Isla Gerrard*
- Peer Education Coordinator – *Tally Costello*
- Ranger Adviser – *Emma Forrester*
- International Adviser – *Emma Crowley*
- Duke of Edinburgh Adviser – *Sarah Goddard*
- Queen’s Guide Award Adviser - *Sarah Goddard*
- Inspire – *Katharine Foxtan & Emma Hird*

LQ Team Lead – Liz Purt

- NLGI & Welcome – *Jackie Bragg*
- Mentors – *Mavis Davison*
- Sign Off – *Carol Massey*
- Verification – *Louise Hopkins*
- Admin – *Carol Medd*





Socially distanced outdoor meetings were held



What's happening in...

The Leys Division



Greenvale Division



Crown Park Division



Wortley Rangers had a fantastic time on their weekend at Waddow (Girlguiding's activity centre in Lancashire). They had a go on the zip wires and a walk into Clitheroe - featuring some delicious hot chocolate!

5th Middleton Guides went to Whiteley Woods in Sheffield. They had an adventurous holiday which included archery, crate stacking, an assault course, wide games and outdoor cooking. They had a great time for their first trip away since being back together... but needed a long nap after!



Robin Hole Update



Robin Hole

Summer 2021



Lost the nettles!



The old fence,
now removed!



The kitchen – from this.....



To the
new
kitchen!





September

County Merchandise
was launched

Out & About Week





October

County Days @ Shine



Opportunity to Meet the County teams, complete training & try some crafts for your unit



Our new County Vice President

Karen Whitelaw has become our newest County Vice President. On accepting the role at the Tarnheights division handover ceremony in October, Karen said she was “honoured to have been asked”. In response to your question, Karen... no we don't think you are that old!





Development Day





Training & new members of the County Office





Hero Awards were presented





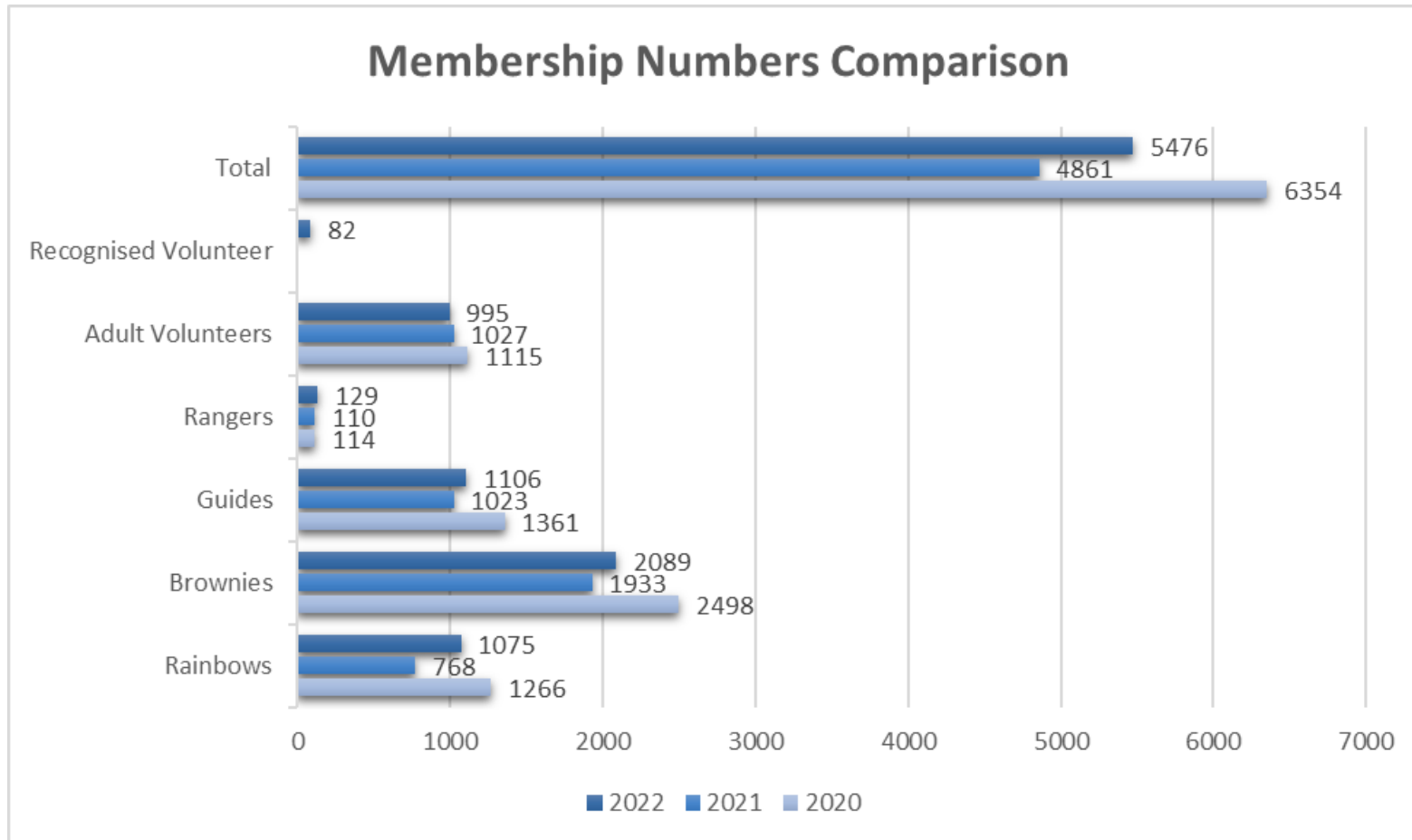
Finance Summary

Receipts	Unrestricted	Designated	Restricted	2021	2020
	£	£	£	£	£
Membership Subscriptions	20,047			20,047	34,249
Investment & Interest Income	2,524			2,524	1,221
Guiding Activities	1,561	644		2,205	13,408
Guiding Development	5,270			5,270	4,812
Grants & Donations		23,613		23,613	5,260
Sundry Other Receipts / Other Revenue	5			5	8
Total	29,407	24,257	0	53,664	58,958
Activity Payments	Unrestricted	Designated	Restricted	2021	2020
	£	£	£	£	£
Membership Subscriptions	3,446			3,446	7,512
Guiding Activities - Running Costs	9			9	7,066
Buildings - Robin Hole		600		600	468
Guiding Development	10,066			10,066	24,060
Total	13,521	600	0	14,121	39,106
Excess Activity Receipts over Payments	15,886	23,657	0	39,543	19,852

Administration Payments	Unrestricted	Designated	Restricted	2021	2020
	£	£	£	£	£
Professional Fees and Services	1,284			1,284	1,056
Grants and Subsidies		418		418	4,035
Robin Hole Running Expenses		26,816		26,816	7,165
County Running Expenses	18,861			18,861	23,326
Trefoil Centre Running Expenses		7,472		7,472	6,567
Total	20,145	34,706	0	54,851	42,149
Surplus / (Deficit) Receipts over Payments	-4,259	-11,049	0	-15,308	-22,297
Cash Flow					
Opening Bank and Cash Balances	69,930	85,729	127,891	283,550	305,847
Surplus / (Deficit)	-4,376	-11,049	0	-15,308	-22,297
Assets Acquired	0	0	-16,599	-16,599	0
Monies held from other units	0	0	0	0	0
Transfers	0	0	0	0	0
Closing Bank and Cash Balances	65,554	74,680	111,292	251,643	283,550



Membership Comparison 2020-2022





Future Plans.....



Thank you for
all you do
for
Girlguiding Leeds

