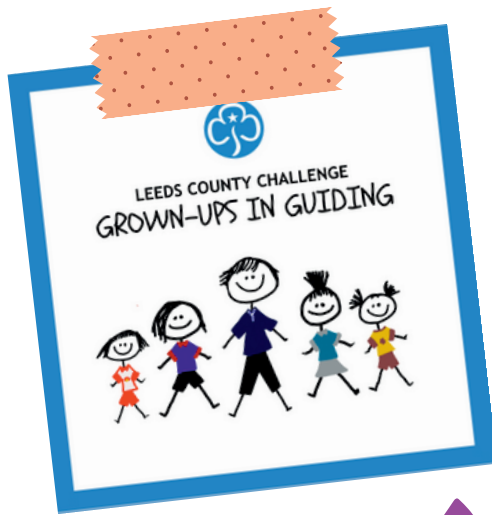
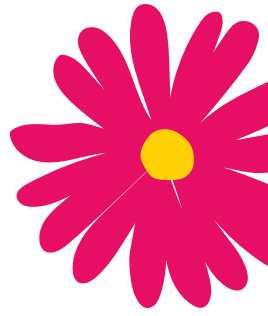


LEEDS COUNTY CHALLENGE BADGE

GROWN-UPS IN GUIDING



The Challenge

We have launched a brand new three-week challenge - "Grown-ups in Guiding". The aim is for grown-ups to get an insight into how a unit runs, the type of activities our girls do and if they want, encourage them to volunteer themselves.

Each grown-up signs up for a three week period to help with the unit. We suggest each unit only has one grown-up at a time.

WEEK 1

Grown-up comes along for the week to observe what goes on during a meeting, joins in with games and chat.

WEEK 2

Grown-up joins in with a group taking an active part in any activities, games or chats.

WEEK 3

Grown-up leads a pre-planned game, and/or an activity. Leader chats to grown-up to see if they would like to continue to help and if so, what role they would like. Grown-up registers on GO.

The 'girl' whose grown-up has come along and completed the three week challenge receives a badge. The grown-up will get a certificate.



THE IMPORTANT STUFF

What if a grown-up has more than one girl in the unit?

If the grown-up has more than one girl in the unit they complete the challenge in, the unit can either purchase an extra badge or complete another 3 weeks.

How do we keep our girls safe?

Before each grown-up takes part they must receive and read a copy of the Unit Safety Guidelines.



www.girlguiding.org.uk/globalassets/docs-and-resources/safeguarding-and-risk/unit-safeguarding-guidelines.pdf



Why?

The challenge is designed to encourage new people to volunteer so if a grown-up is already volunteering in a unit, then the unit leader may wish to purchase a badge and certificate to be presented.



What if a grown-up has a girl in a different section to mine as well?

If a grown-up has a girl in another section they will need to complete the challenge in that section to earn the girl a badge. This will include grown-ups already volunteering, e.g. a Brownie leader would need to complete 3 weeks in the child's Rainbow unit.

How do I get started?

Each unit can request up to 3 pack of badges, certificates and unit safety guidelines free of charge.

Additional packs can be ordered for £1 each (plus postage) by emailing county.projects@girlguidingleeds.org.uk