

County President
Lynne Reid

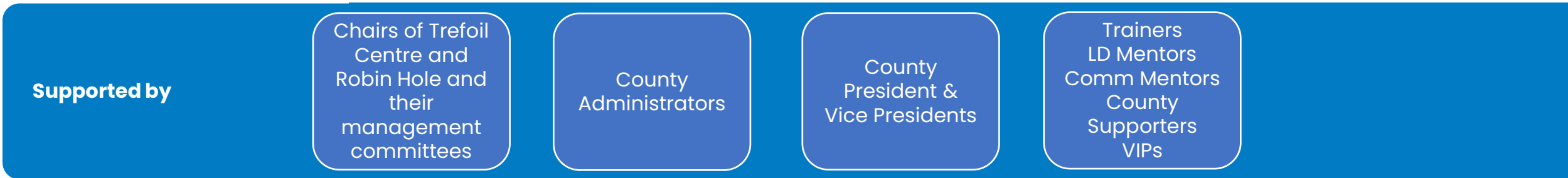
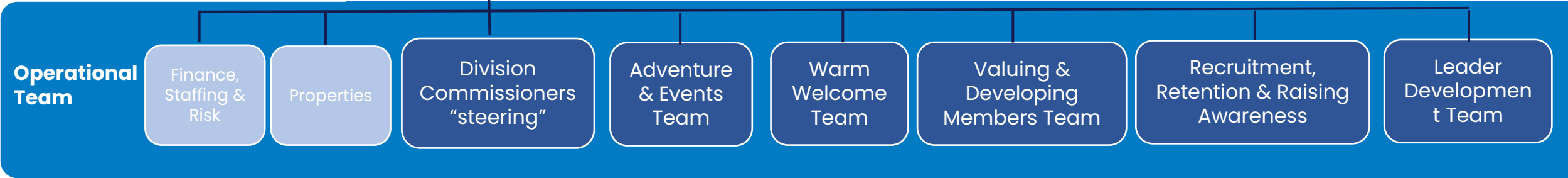
Vice
President
Maureen
Hallatt

Vice
President
Mavis
Davison

Vice
President
Judith
Emsley

Vice
President
Glennis
Allan

Vice
President
Karen
Whitelaw



County Commissioner

Louise Flynn

**County
President**

Lynne Reid

**County
Secretary**

Sharon
Fielden

**County
Treasurer**

Marion
Simpson

**County
Badge
Secretary**

Karen
Whitelaw

**County
Archivists**

Marjorie &
Judith
Emsley
and
Barbara
Barron

**Chair of
Robin Hole
Management
Committee**

Audrey
Morrall

**Chair of
Trefoil
Centre
Management
Committee**

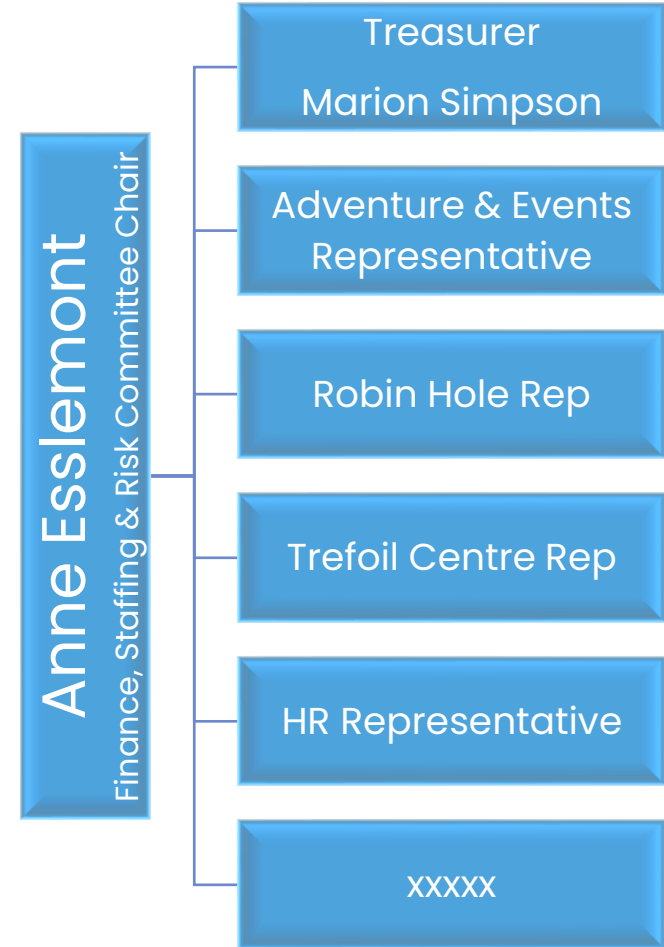
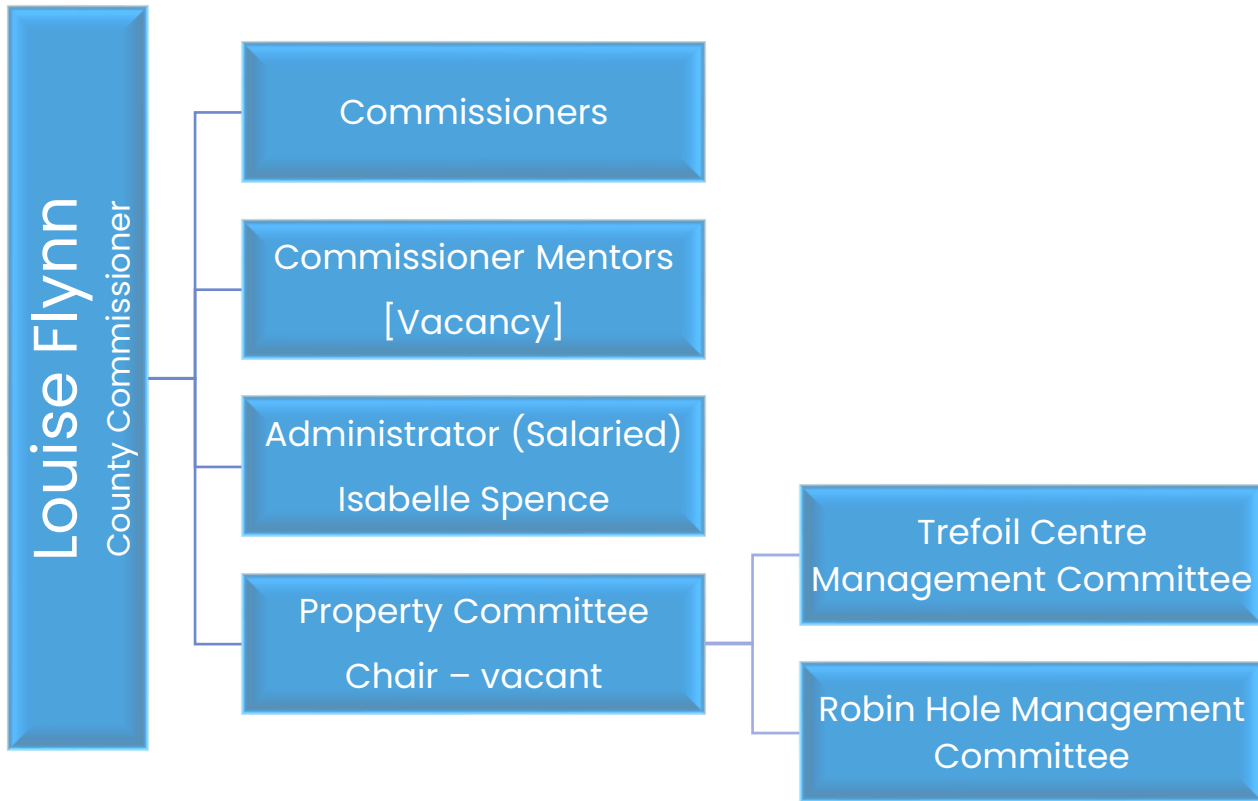
Anita
Caldwell

Division Commissioners



Division Commissioners





Adventure & Events Team

Team Lead – Jane Girt

Activity Advisor Team

Going Away With Team

Task and Finish Teams – Leader Events

Task and Finish Teams – Girl Events

**Going Away With
Co-ordinator**

Anne Esslemont

Rainbow GAW Advisor

Anne Schofield

Brownie GAW Advisor

Pam Clark & Cathy
Barratt

**Guides and Rangers
GAW Advisor**

Marjorie Bell

International RENS

[Vacancy]

GAW Mentors

[from within Divisions]

Outdoor Advisor

Lynne Baum

Walking Advisor

Rachel Denton

Water Advisor

Anne Esslemont

Archery Advisor

Jo Puttock

Climbing Advisor

[Vacancy]

**International
Advisor**

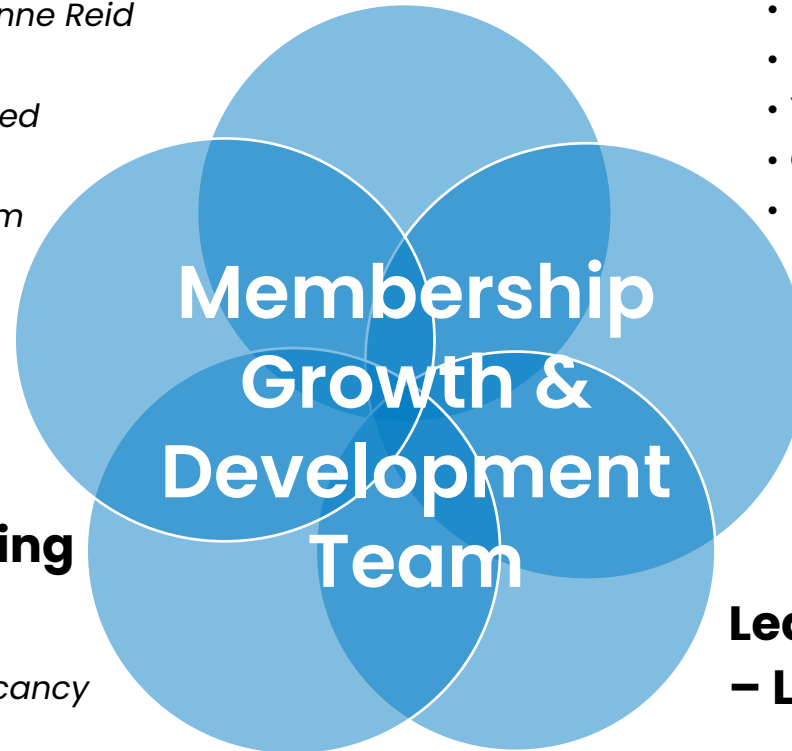
[Vacancy]

Warm Welcome Lead – Jean Woodcock

- Join Us Coordinators – *Jean Woodcock & Lynne Reid*
- Welcomers/Buddies – *Division based*
- DBS Coordinator/DBS Verifiers – *Division based*
- GO Coordinator – *Sandra Goddard*
- Induction – *in conjunction with Training Team*
- Inclusion & Diversity Adviser – *Joanne Hoare*
- SEN Adviser – *Heather Dowling*

Recruitment, Retention & Raising Awareness Lead – Vacant

- Publications (Newsletters & Resources) – *Vacancy*
- Social Media – *Liisa Suidt & Division Teams*
- Website – *Glow (Office/Liisa providing content)*
- Public Relations – *vacancy*
- Getting ready for growth – *Davina Scholefield*



Valuing & Developing Members Lead – Anne Esslemont

- Recognition – *Andrea Simon*
- Training – *vacancy*
- Young Leader Adviser – *Isla Gerrard*
- Peer Education Coordinator – *vacant*
- Ranger Adviser – *Emma Forrester*
- Duke of Edinburgh Adviser – *Sarah Goddard*
- Young External Volunteer Supporter – *vacancy*
- Queen's Guide Award Adviser – *Sarah Goddard*
- Inspire – *Flossie Shaw*

Leader Development Team Lead – Liz Purt

- L in T Coordinators – *Jackie Bragg, Beryl Lynes*
- Mentors – *Mavis Davison*



Mavis Davison
Matching Leaders in Training
with Mentors
mentors@girlguidingleeds.org.uk



Jackie Bragg & Beryl Lynes
New leaders, Leader Development
Programme verification, LDP warm
welcome
LinT@girlguidingleeds.org.uk

Leader Development Programme Support Team

Liz Purt
Leader Development team
coordinator and support for our
mentors
LDlead@girlguidingleeds.org.uk

